

★★ JUNE 6-JULY 26! LOG BOOKS & ACTIVITIES, WIN PRIZES! ★★



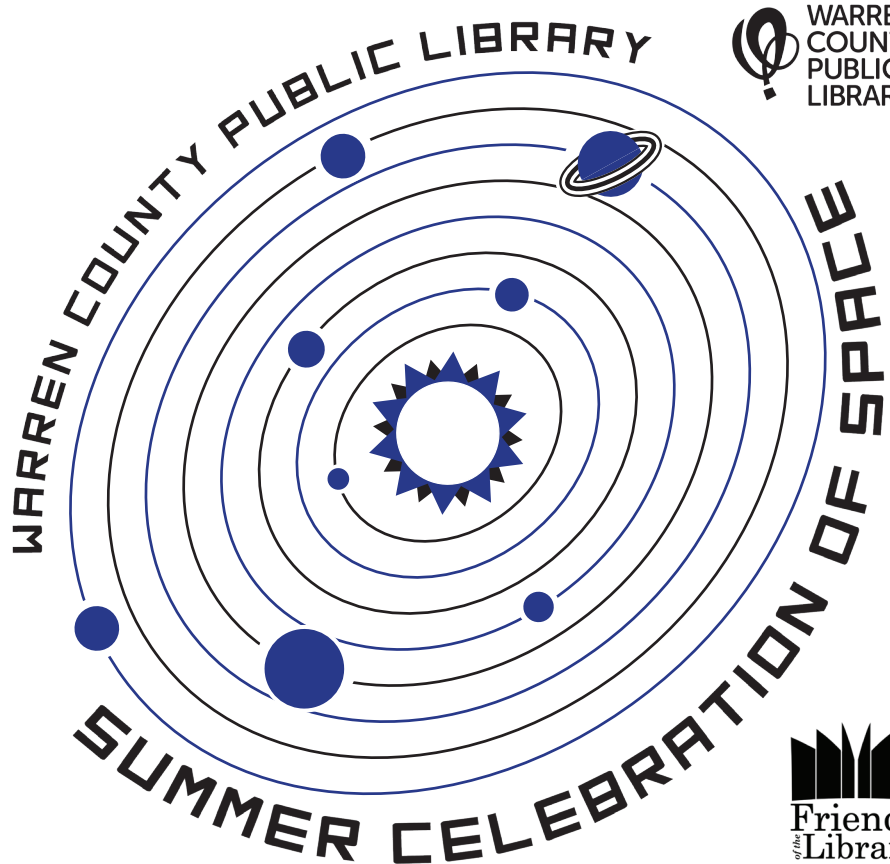
**FAMILY KICKOFF:**

ACTIVITIES, TIE-DYE, WORKSHOPS,  
SPECIAL GUESTS, AND MUCH MORE!  
**THURSDAY, JUNE 6 @ 10 A.M.-NOON**  
**NATIONAL CORVETTE MUSEUM**  
350 CORVETTE DR, BOWLING GREEN



**TEEN/ADULT KICKOFF:**

**ASTRONAUT STORY MUSGRAVE**  
**THURSDAY, JUNE 6 @ 6:00 P.M.**  
**SLOAN CONVENTION CENTER**  
1021 WILKINSON TRACE, BOWLING GREEN  
*Free tickets available at [www.warrenpl.org/tickets/](http://www.warrenpl.org/tickets/)!*



WARREN  
COUNTY  
PUBLIC  
LIBRARY

Friends  
of the  
Library  
WARREN COUNTY

**NEW SUMMER READING PRE-REGISTRATION!**

Skip the line at kickoff by registering early! Pre-registration begins at all locations and online on Monday, May 6. Summer Reading programs begin June 6 and run until July 26!

★★★ SPECIAL PRESENTATIONS ★★★



**MR. BOND THE  
SCIENCE GUY**  
**TUESDAY, JUNE 11**  
**2:00 P.M.**  
**BOYS AND GIRLS  
CLUB**



**NASHVILLE ZOO:**  
**ANIMALS IN THE  
STARS**  
**THURSDAY, JUNE 13**  
**3:00 P.M.**  
**MAIN LIBRARY**



**MAGIC &  
ILLUSIONS WITH  
AARON HARP**  
**MONDAY, JUNE 17**  
**6:00 P.M.**  
**SMITHS GROVE**



**DOWN  
TO EARTH  
AERIALS**  
**FRIDAY, JUNE 21**  
**10:00 A.M.**  
**BOB KIRBY BRANCH**

**STORY TRAILS AT COMMUNITY FARMERS MARKET**

Join us for an immersive story time experience at Community Farmers Market (2319 Nashville Rd), featuring *Plant the Tiny Seed* by Christie Matheson. No registration required.

**TUESDAY, JUNE 25**  
**2:00 P.M.**

**TUESDAY, JULY 9**  
**2:00 P.M.**

**TUESDAY, JULY 16**  
**2:00 P.M.**

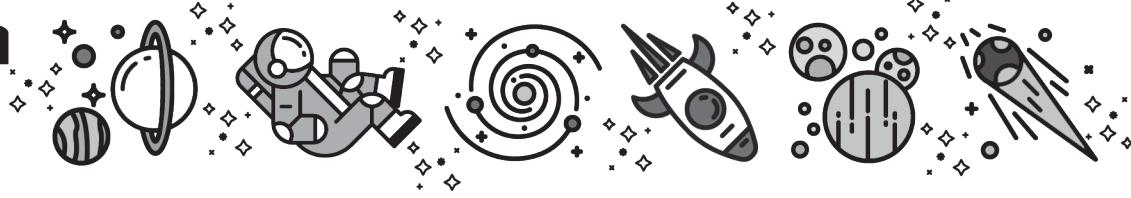
**TUESDAY, JULY 23**  
**2:00 P.M.**

**VISIT [WARRENPL.ORG/SUMMER](http://WARRENPL.ORG/SUMMER) FOR MORE INFORMATION!**

**270.781.4882 • [www.warrenpl.org](http://www.warrenpl.org)**



# ENAC



3	MONDAY	4	TUESDAY	5	WEDNESDAY	6	THURSDAY	7	FRIDAY							
<p><b>NEW FOR 2019: PRE-REGISTRATION! REGISTER ONLINE OR AT ANY LIBRARY LOCATION STARTING MAY 6!</b></p>	<p><b>BOOKS + ACTIVITIES LOGGED = GREAT PRIZES!</b></p>	<p><b>11</b> Mr. Bond the Science Guy, 2 p.m. @ Boys &amp; Girls Club</p> <p>A Different Type of Space: Guided Hike (Tween/Teen) 4 p.m @ Lost River Cave</p> <p>Galaxy Pendants (Adult) 6 p.m. @ Kirby</p> <p>Air &amp; Space Camp @ Aviation Heritage Park 9 a.m. - 12 p.m. Registration required, visit <a href="http://www.warrenpl.org/camp">www.warrenpl.org/camp</a>.</p>	<p><b>10</b></p> <p>Solar System Science! 5:30 p.m @ Smiths Grove</p>	<p><b>12</b></p>	<p><b>13</b></p>	<p><b>14</b></p>	<p><b>17</b></p> <p>Magic and Illusions with Aaron Harp! 6 p.m @ Smiths Grove</p>	<p><b>18</b></p> <p>Phases of the Moon Wall Hanging (Adult) 6 p.m. @ Main</p>	<p><b>19</b></p>	<p><b>20</b></p> <p>Preschool Spanish: ¡Viaje Galáctico! 10 a.m @ Kirby</p> <p>Pets in Space! 3 p.m @ Kirby</p>	<p><b>21</b></p> <p>Down to Earth Aerials 10 a.m @ Kirby</p> <p>SATURDAY, JUNE 22: Tabletop Gaming: Dungeons &amp; Dragons (Teen/Adult) 2 p.m. @ Main</p>	<p><b>24</b></p> <p>Origami Star Garland (Adult) 6 p.m @ Kirby</p>	<p><b>25</b> Plant a Tiny Seed 2 p.m @ Community Farmer's Market</p> <p>Strategic Mobile Laser Tag (Teen/Adult) 4:30 p.m. @ Kirby</p>	<p><b>26</b></p>	<p><b>27</b> Galaxy Jars 3 p.m. @ Main</p> <p>Kokedama String Garden (Adult) 6 p.m. @ Main</p> <p>Murder Mystery Science Theatre 9000! (Teen/Adult) 6 p.m. @ Kirby</p>	<p><b>28</b></p> <p>SATURDAY, JUNE 29: Woven Coasters (Adult) 2 p.m. @ Graham</p>
<p><b>STEM Camp @ Kirby from 9 a.m. - 12 p.m. All week. Registration required, visit <a href="http://www.warrenpl.org/camp">www.warrenpl.org/camp</a>.</b></p>																
<p><b>Theatre Camp @ Kirby, Monday-Thursday 9 a.m. - 1 p.m., Friday 3 - 7 p.m. Application required, visit <a href="http://www.warrenpl.org/camp">www.warrenpl.org/camp</a>. Little Library Camp @ Main from 10 a.m. - 11:15 a.m. All week. Registration required, visit <a href="http://www.warrenpl.org/camp">www.warrenpl.org/camp</a>. Ukulele Camp @ Main from 1 p.m. - 3 p.m. All week. Registration required, visit <a href="http://www.warrenpl.org/camp">www.warrenpl.org/camp</a>.</b></p>																
<p><b>Tween Cooking Camp* @ SOKY Marketplace from 9 a.m. - 12 p.m. Teen Cooking Camp* @ SOKY Marketplace from 1 p.m. - 4 p.m. *Registration required, visit <a href="http://www.warrenpl.org/camp">www.warrenpl.org/camp</a>.</b></p>																
<p><b>STEM Camp @ Kirby from 9 a.m. - 12 p.m. All week. Registration required, visit <a href="http://www.warrenpl.org/camp">www.warrenpl.org/camp</a>.</b></p>																



# SUMMER CELEBRATION IS FOR TEENS & ADULTS, TOO! Log books and activities before July 26 to win great prizes!

More programs to be announced. \* = Registration required, visit [www.warrenpl.org/events](http://www.warrenpl.org/events) for more information or to sign up.

## Galaxy Pendants\*

Tuesday, June 11 @ 6:00 p.m.  
Bob Kirby Branch

## Phases of the Moon Wall Hanging\*

Tuesday, June 18 @ 6:00 p.m.  
Main Library

## Tabletop Gaming:

### Dungeons & Dragons

Saturday, June 22 @ 2:00 p.m.  
Main Library

## Origami Star Garland\*

Monday, June 24 @ 6:00 p.m.  
Bob Kirby Branch

## Strategic Mobile Laser Tag\*

Tuesday, June 25 @ 4:30 p.m.  
Bob Kirby Branch

## Kokedama String Garden\*

Thursday, June 27 @ 6:00 p.m.  
Main Library

## Murder Mystery Science Theatre 9000!

Thursday, June 27 @ 6:00 p.m.  
Bob Kirby Branch

## Woven Coasters\*

Saturday, June 29 @ 2:00 p.m.  
Graham Drive Branch

## Woven Coasters\*

Monday, July 8 @ 6:00 p.m.  
Smiths Grove Branch

## Galaxy Pendants\*

Tuesday, July 9 @ 6:00 p.m.  
Main Library

## Constellation Art\*

Wednesday, July 10 @ 6:00 p.m.  
Bob Kirby Branch

## Kokedama String Garden\*

Tuesday, July 16 @ 6:00 p.m.  
Bob Kirby Branch

## Tabletop Gaming:

### Magic the Gathering

Saturday, July 20 @ 2:00 p.m.  
Main Library

## Who Do You Think You Are: Astrological Charts\*

Monday, July 22 @ 6:00 p.m.  
Bob Kirby Branch

## Strategic Mobile Laser Tag\*

Thursday, July 25 @ 4:30 p.m.  
Bob Kirby Branch

Please check our online calendar for the most up to date program information!



## DAVID BELL

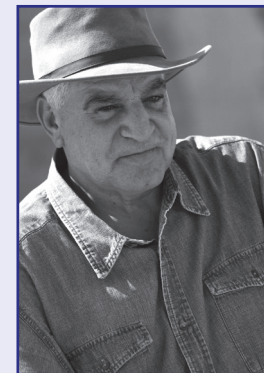
BOOK LAUNCH FOR *LAYOVER*  
TUESDAY, JULY 2  
BOB KIRBY BRANCH  
6:00 P.M.

Free tickets available online at  
[www.warrenpl.org/tickets](http://www.warrenpl.org/tickets)

## INDIE Author Fair

SATURDAY, JULY 13  
BOB KIRBY BRANCH  
10:00 A.M. - 2:00 P.M.

Regional authors, writing workshops,  
and panel discussions!



## ZAHİ HAWASS

SAVE THE DATE!  
THURSDAY, AUG. 15  
SLOAN CONVENTION  
CENTER @ 6:00 P.M.

Free tickets available online at  
[www.warrenpl.org/tickets](http://www.warrenpl.org/tickets)

Special thanks to the **Friends of the Library**, whose generosity and support make Summer Celebration possible! Thank you to all of our sponsors and supporters!



**Kiwanis**  
BOWLING GREEN, KY



FRUIT OF THE LOOM®



**WARREN COUNTY**  
Community Early Childhood Council  
KENTUCKY GOVERNOR'S OFFICE OF EARLY CHILDHOOD



Bowling Green Parks & Recreation, SoKY Marketplace, UK Extension Office, Warren County Schools, Bowling Green City Schools, Community Farmers Market, New Sound Music Studio, Strategic Mobile Laser Tag, Half Price Books, Culver's, Chuck E. Cheese's, Blaze Pizza, Bowling Green Hot Rods, Azzip Pizza, STAKZ Frozen Yogurt, Lakeshore Learning, United Way, Paint'n Place, Zest! Juice for Life, CrossFit R837, The Confucius Institute, BGGOVTOGO, KHEAA, Norton Children's Hospital, Sylvan Learning Center, BRIGHT Coalition, Bowling Green Fire Department, Historic Railpark and Train Museum, Lost River Cave, SKYCTC, Conundrum Workshop, eHotAir, Dance Arts, Orchestra Kentucky of Bowling Green, Royal Music Company, Inc., Cash Express, New Beginnings Therapeutic Riding, Tippi Toes® SOKY, BG OnStage, and 643 Sports Bar and Grill.

Thank you to our media sponsors: WNKY, WBKO, WGGC, WDNS, and WUHU.

**MAIN LIBRARY**  
1225 State Street  
270.781.4882

**BOB KIRBY BRANCH**  
175 Iron Skillet Ct  
270.782.0252

**SMITHS GROVE BRANCH**  
115 Second St, Smiths Grove  
270.563.6651

**GRAHAM DRIVE BRANCH**  
305 Graham Drive  
270.781.1441

**MOBILE BRANCH**  
270.535.4885  
(see website for current schedule)